

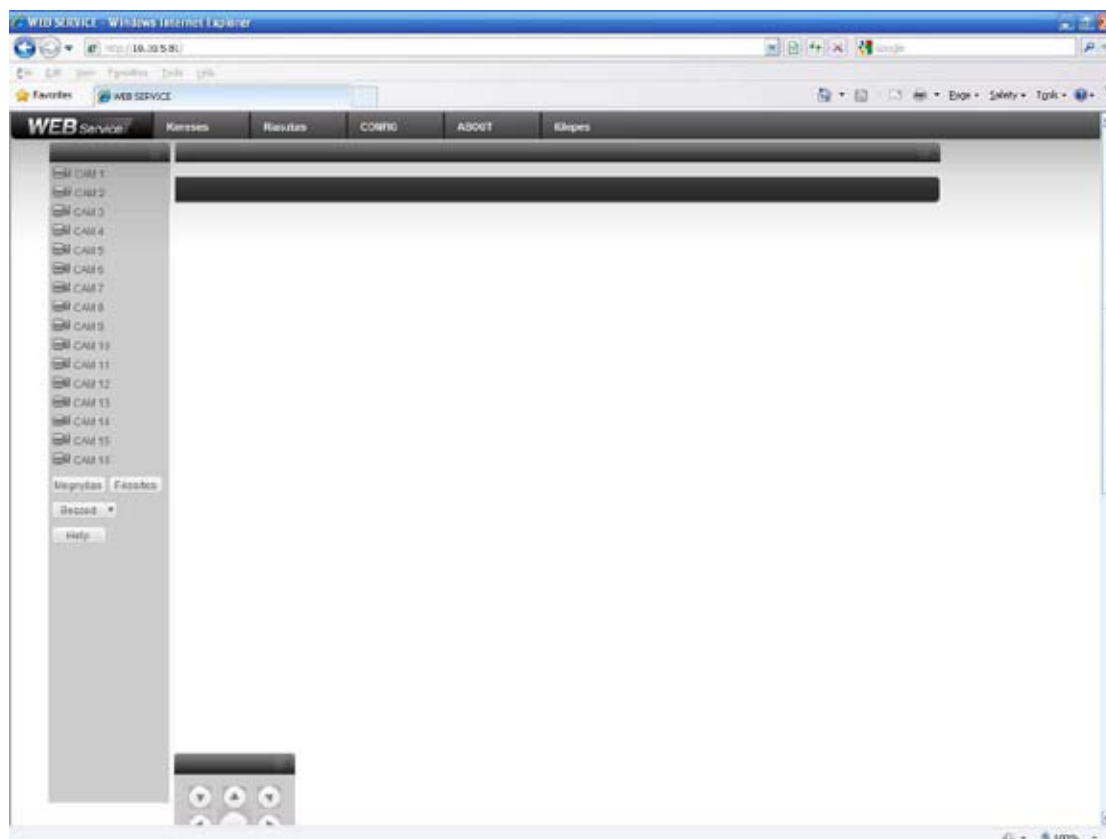
View DVR with IE8

1. General Description

This document is about how to view our DVR through web interface with IE8. When you meet problems with IE8, please refer to this manual.

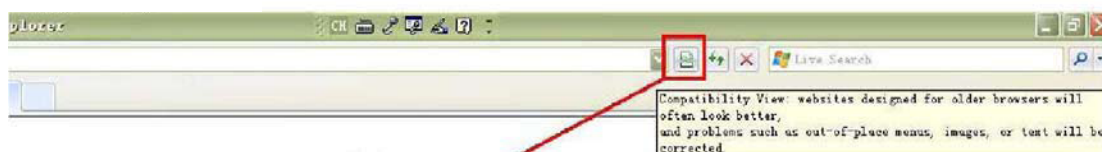
2. Run Web interface with IE8

For IE8, sometime it will not run with the right mode, there are 2 ways to solve the problem



1- Use the **Compatibility View** function of IE8

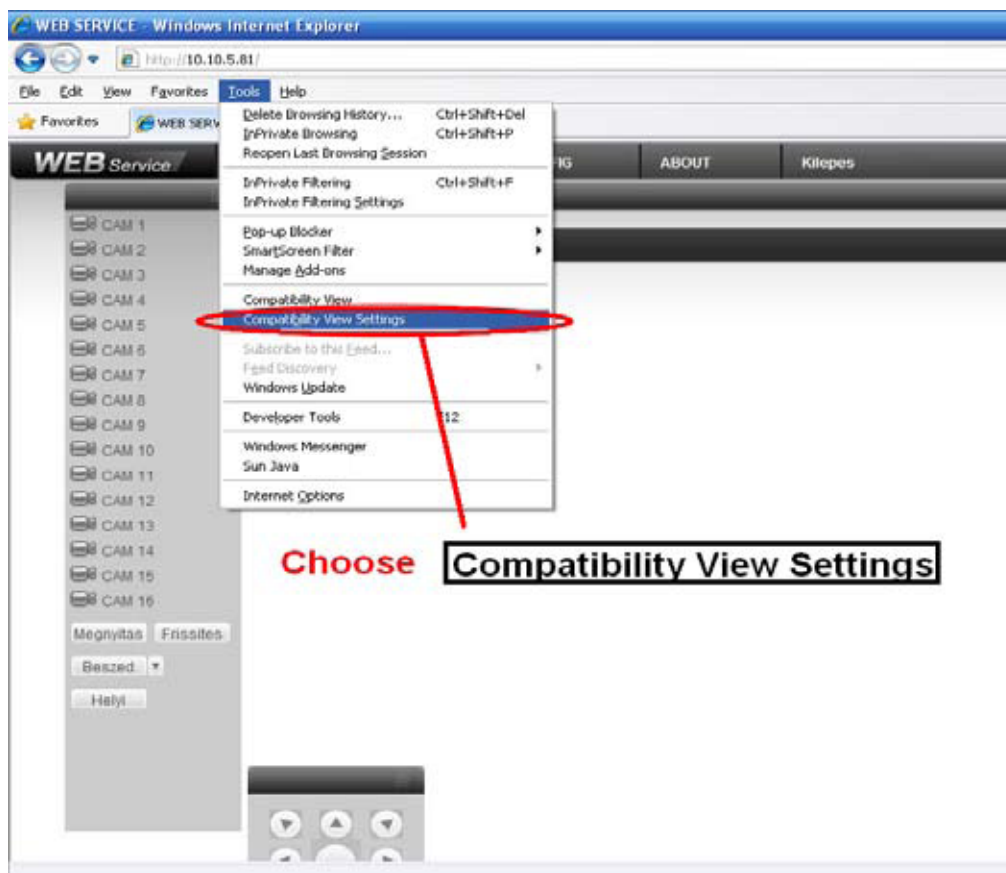
In this way, every time you open the IE interface, you must click this button



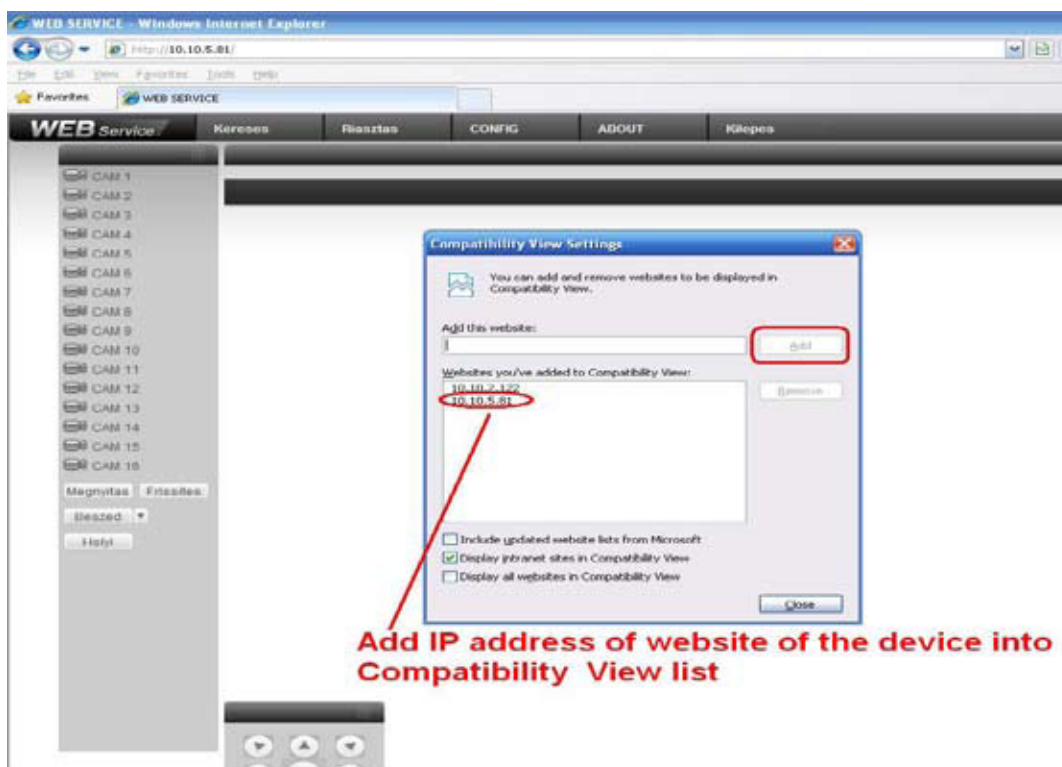
For IE8 if the interface is unusable, please click on the bottom

2- Add an IP address or a website into **Compatibility View Settings**

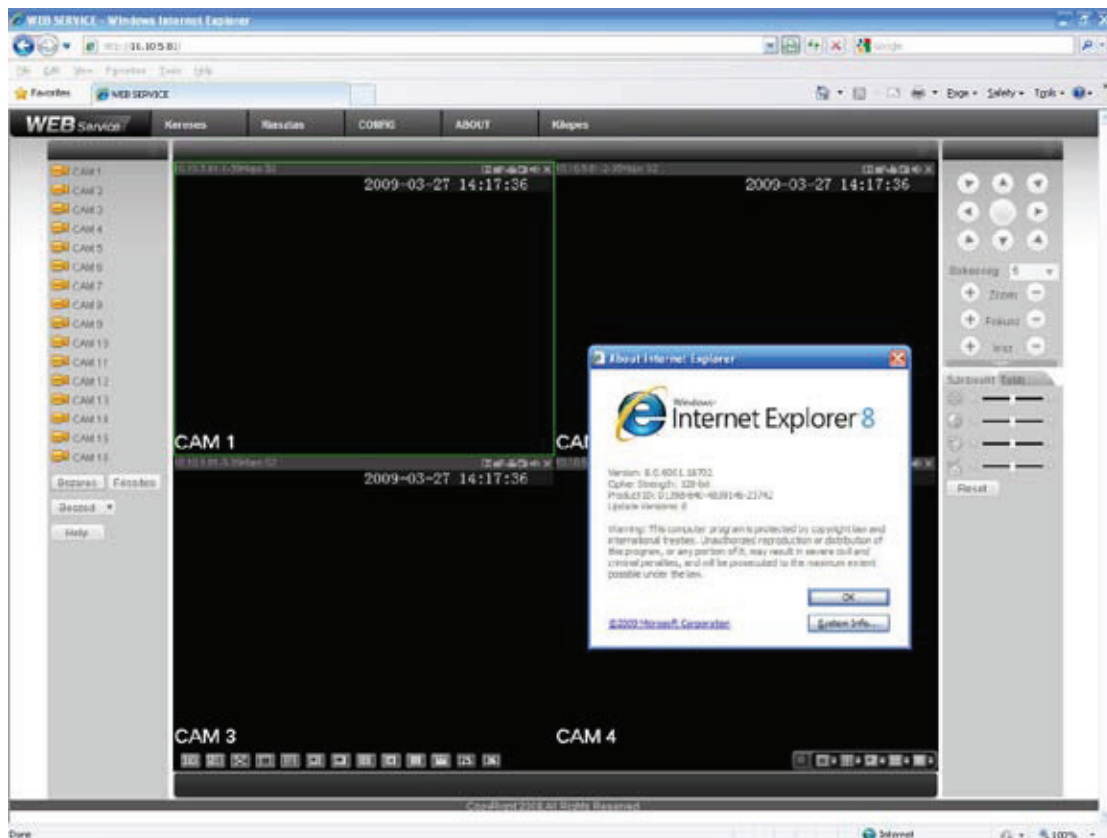
A - Choose **Compatibility View Settings** in **Tool** menu



B- Add the IP or domain name of DVR (NVR,IP Camera) into **Compatibility View Settings** list

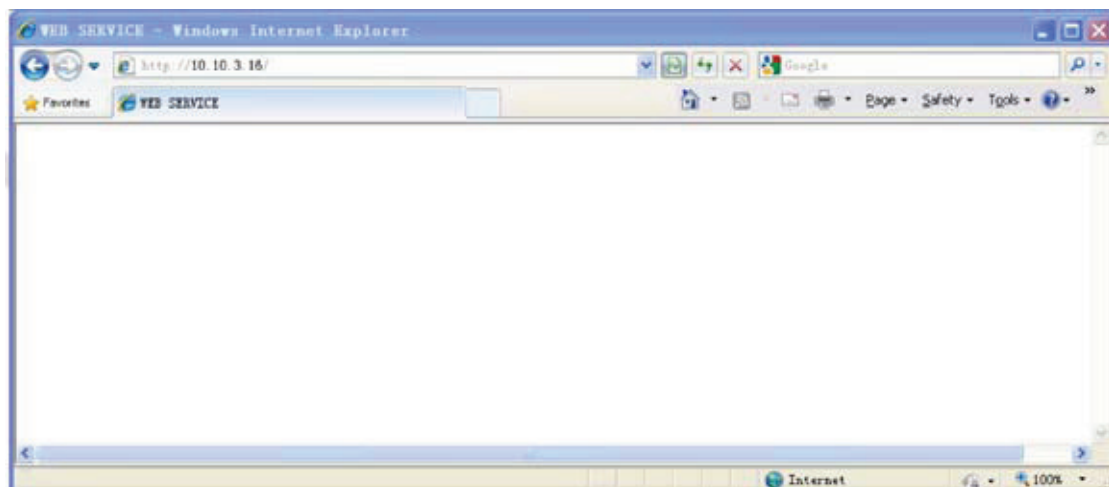


C- Now you can get the web interface with the right mode

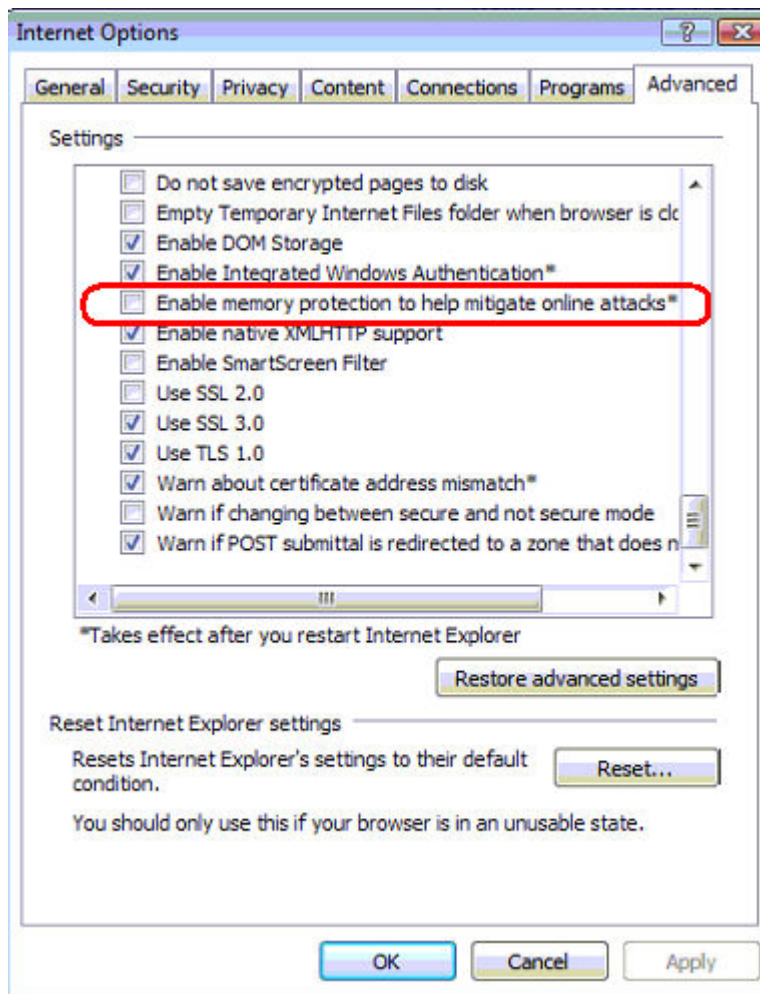


3. Download ActiveX with IE8

A- For some PC when you update windows and install IE8, the ActiveX will not be installed.



B- Please don't tick **Enable memory protection to help mitigate online attacks**



4. Further Information

If you still have any problems about these functions, please contact our engineer